



Prescott College Campus Commons

Integrated passive and active rainwater harvesting



SKYWATER®



† barnabas kane & associates
ENVIRONMENTAL DESIGN®

Prescott College Campus Commons

Project Overview

Campus core integrated with rainwater harvesting

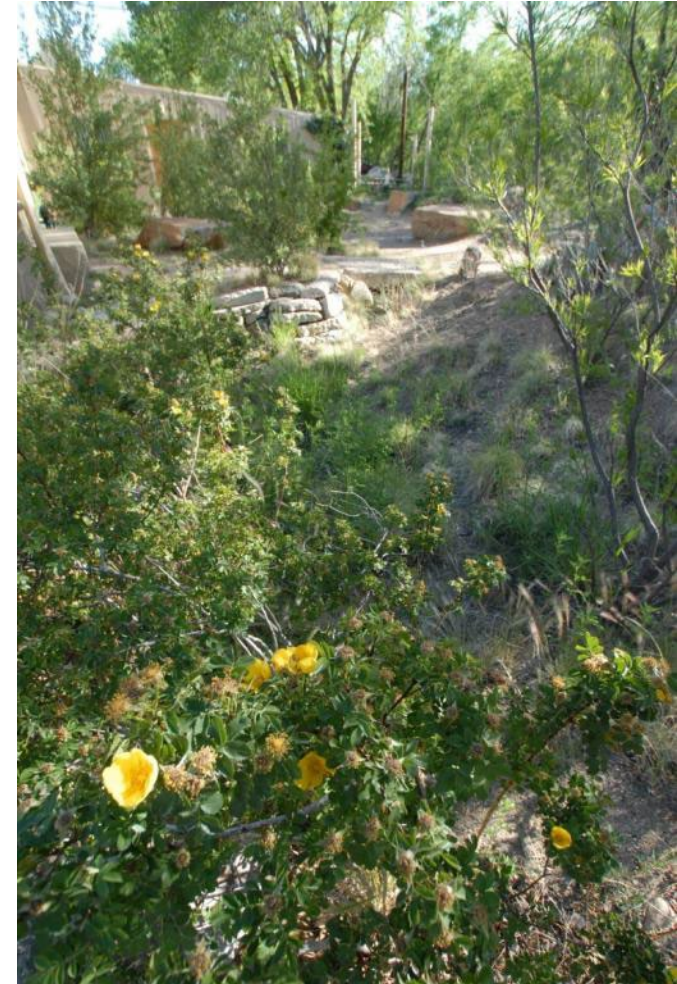
- **Industry/Sector:** Higher education
- **Client:** Prescott College
- **Location:** Prescott, Arizona
- **Completion:** 2013
- **Description:** First phase: passive; future phase: active. Our master-plan approach to the campus core redevelopment took into account existing and future hardscape. We planned surfaces to collect precipitation and deliver it to native and edible landscape beds, graded as basins to receive runoff and make passive collection the landscape's main irrigation supply.



Prescott College Campus Commons

Design Data

- **Water use:** landscape irrigation
- **Annual average rainfall:** 13.9 in. (historically 18 in.)
- **Available roof area:** 5,000 sq. ft. (not yet integrated)
- **Roof material:** multiple
- **Additional hard surface area:** 7,500 sq. ft., concrete, permeable pavers, decomposed granite, soil



Prescott College Campus Commons

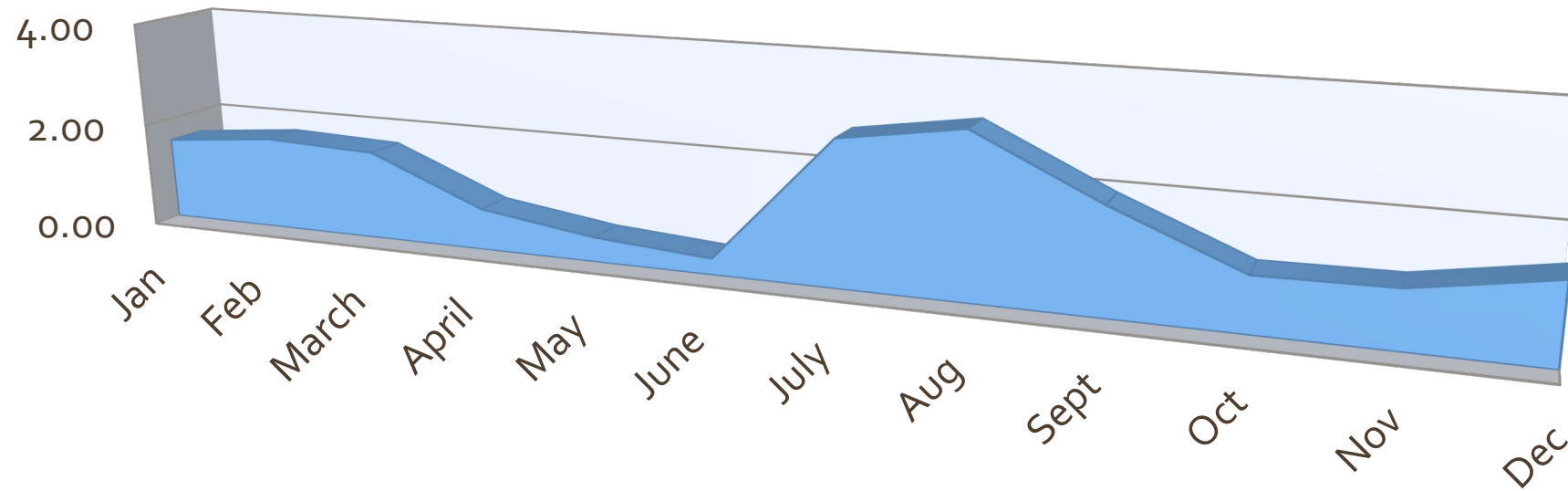
Rainwater System

- **Storage:** passive
- **System:** landscape swales, hardscape (planned steel tanks)
- **Roof and surface conveyance:** wet
- **Irrigation:** gravity



Prescott College Campus Commons

Average Annual Precipitation (in.)











GROVE AVENUE

SHELDON ST.

WESTERN AVENUE

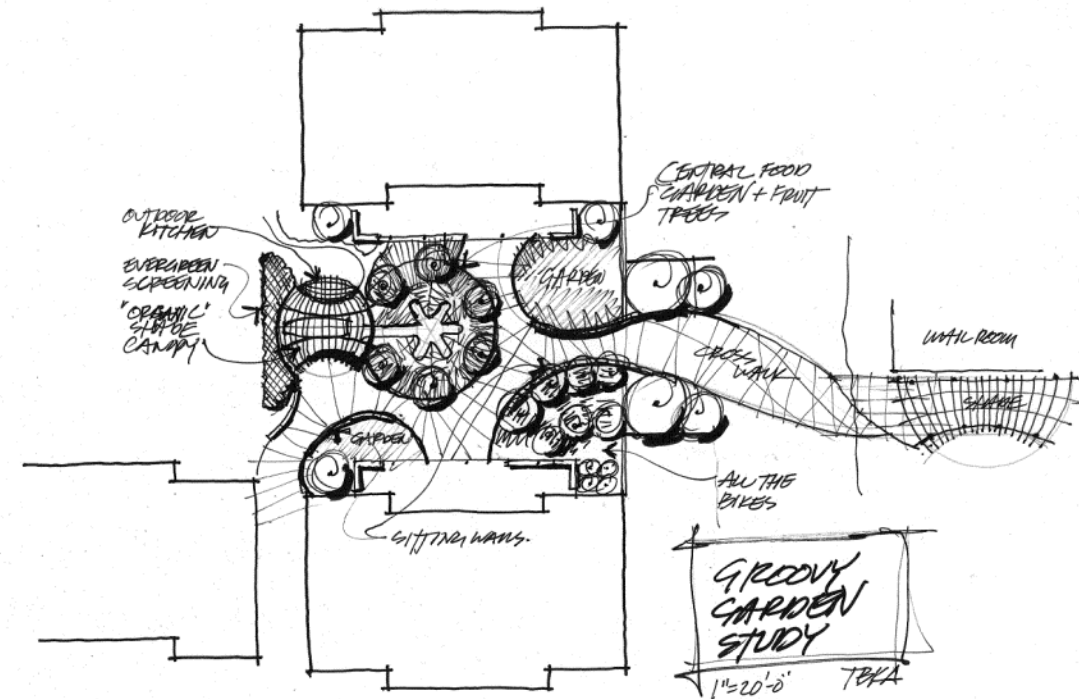


"ECHOES"
 CAMPUS COMMONS
 PRESCOTT COLLEGE 1.19.2011



Prescott College Campus Commons Team

- **Architect:** Weddle Gilmore Black Rock Studio
- **Designer:** TBK Environmental Design
- **General Contractor:** Haley Construction
- **Installer:** Prescott College staff
- **Other Consultants:** Schelor Landscape Architects; Prescott College faculty, students, staff





Skywater

P.O. Box 2100

Prescott, Arizona 86302

928-445-3515

skywaterarizona.com

