



The Village
Prescott College
Student Housing

Integrated passive and active rainwater harvesting



SKYWATER®



t barnabas kane & associates
ENVIRONMENTAL DESIGN®

The Village Prescott College Student Housing Project Overview

Split system designed in tandem with structures

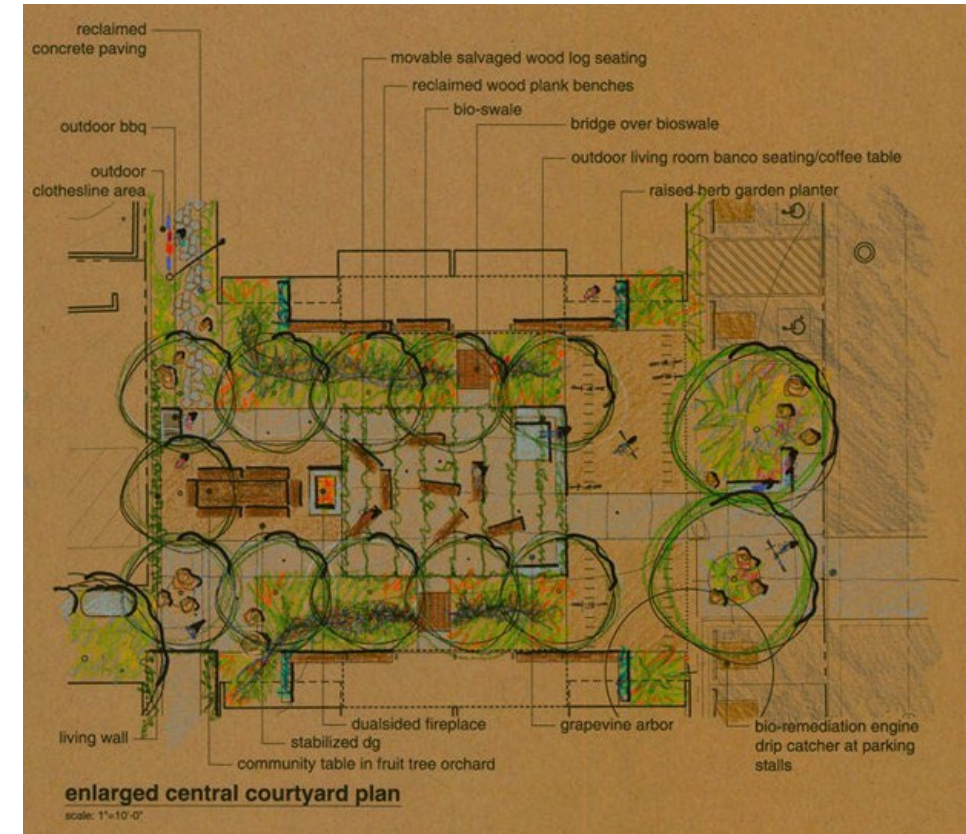
- **Industry/Sector:** Higher education
- **Client:** Prescott College
- **Location:** Prescott, Arizona
- **Completion:** 2013
- **Description:** We designed the courtyard landscape with water demand in mind. The fruiting trees, shrubs and grape vines are irrigated with an isolated 5,000-gal. pressurized system, while the 3,000-gal. pressurized system demands of the vegetable garden. The balance of the exclusively native landscape is irrigated with municipal water for a two year establishment period, then precipitation only.



The Village Prescott College Student Housing

Design Data

- **Water use:** landscape and garden irrigation
- **Annual average rainfall:** 13.9 in. (historically 18 in.)
- **Available roof area:** 1,440 sq. ft. and 2,880 sq. ft. (4,320 sq. ft. total)
- **Roof material:** metal
- **Additional hard surface area:** 1,500 sq. ft., concrete and soil



The Village Prescott College Student Housing

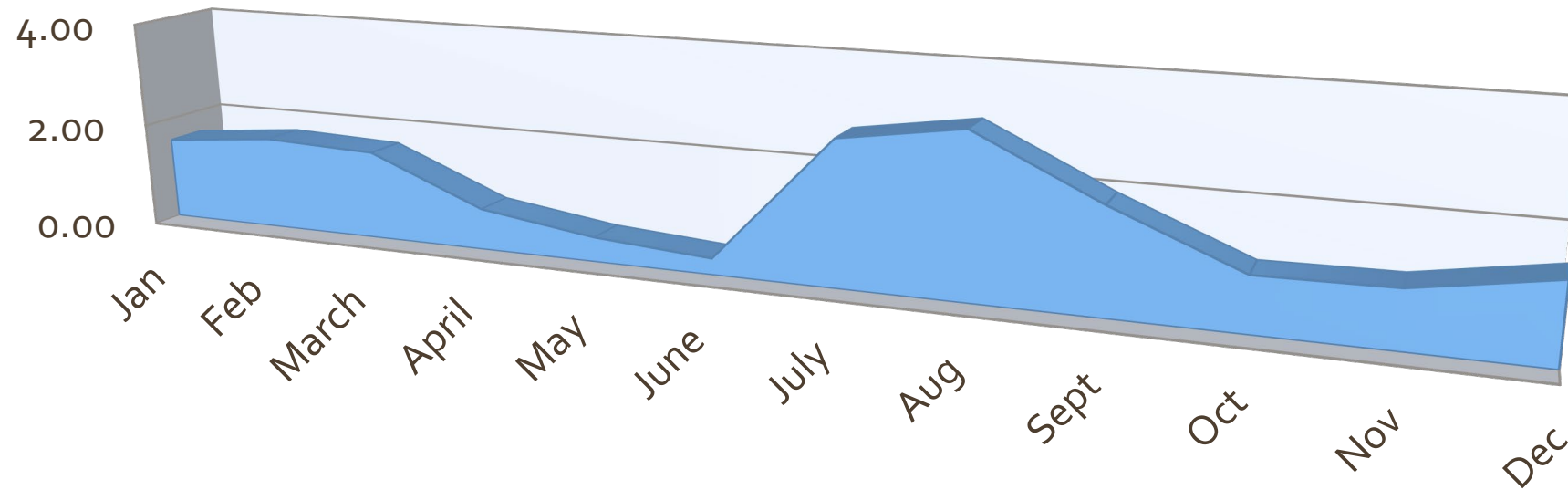
Rainwater System

- **Storage:** 8,000 gal.
- **System:** Split system. Isolated 5000 gal. and 3,000 gal. pressurized systems; passive system
- **Pump:** 1: 1.0 hp sub 2: .75 hp sub
- **Filtration:**
- **Roof and surface conveyance:** wet
- **Irrigation:** gravity
- **Overflow:** to landscape

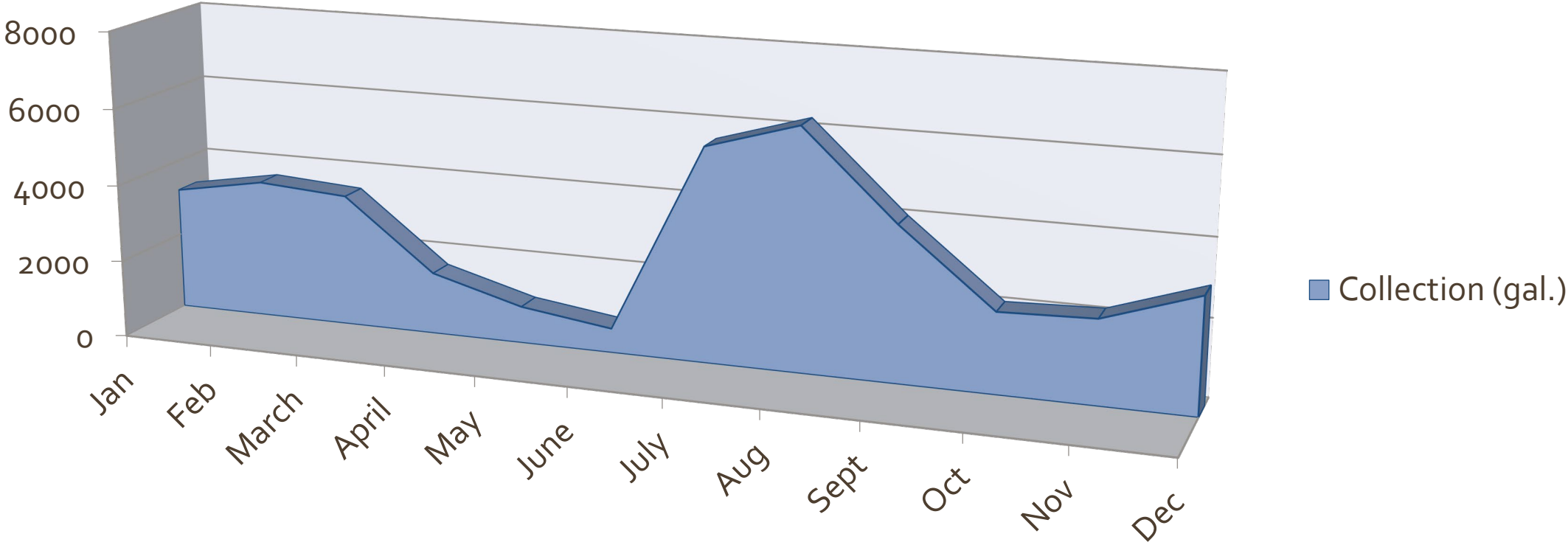


The Village Prescott College Student Housing

Average Annual Precipitation (in.)



The Village Prescott College Student Housing Collection Potential (gal)



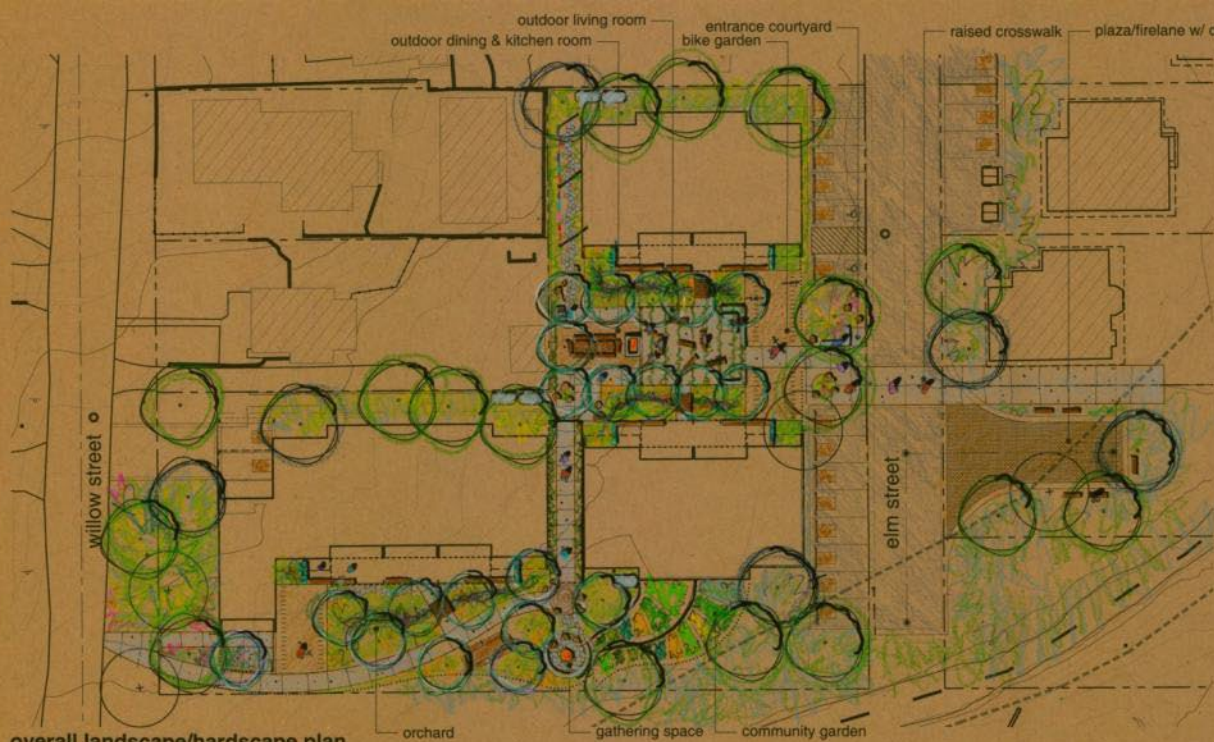






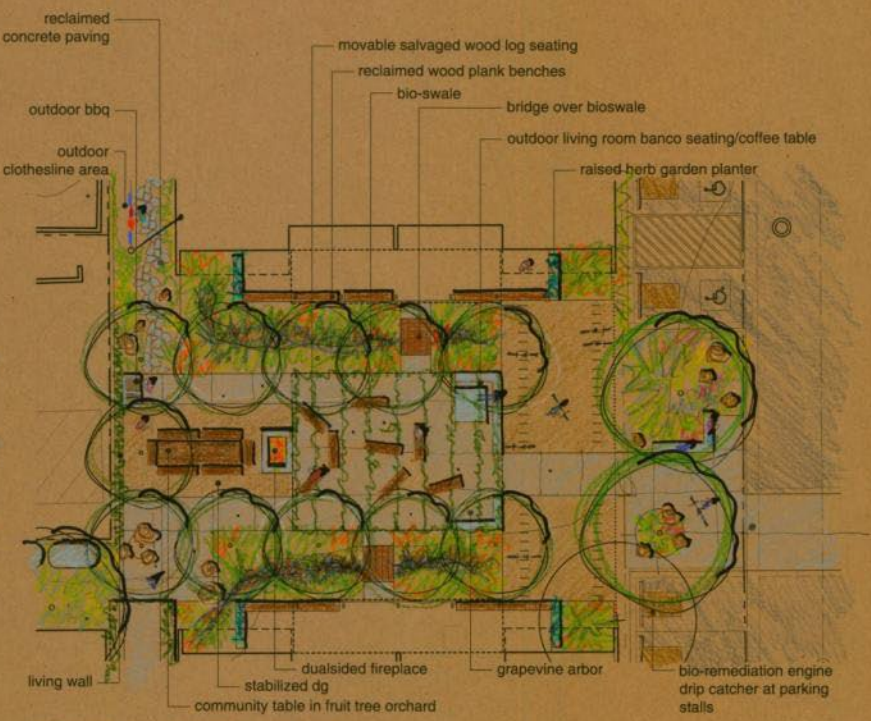






overall landscape/hardscape plan

scale: 1"=20'-0"



enlarged central courtyard plan

scale: 1"=10'-0"



enlarged south garden plan

scale: 1"=10'-0"

prescott college student housing landscape master plan

13 october 2010



colwell : shelor landscape architecture

The Village Prescott College Student Housing Team

- **Architect:** Weddle Gilmore Black Rock Studio
- **Designer:** TBK Environmental Design
- **General Contractor:** Haley Construction
- **Installer:** Prescott College staff
- **Other Consultants:** Schelor Landscape Architects; Prescott College faculty, students, staff
- **Notable:** LEED Platinum, AIA APS Green Energy Award





Skywater

P.O. Box 2100

Prescott, Arizona 86302

928-445-3515

skywaterarizona.com

